



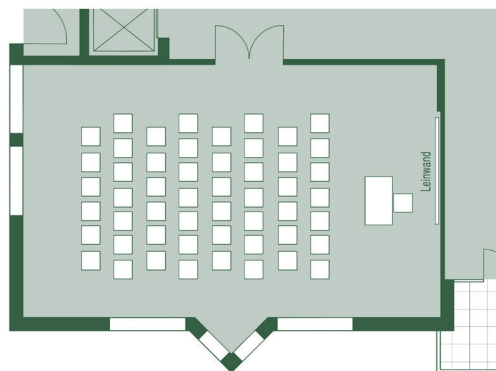
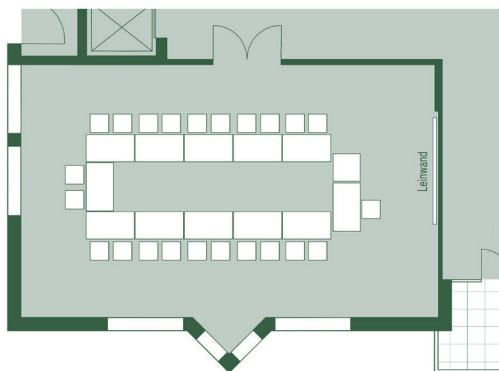
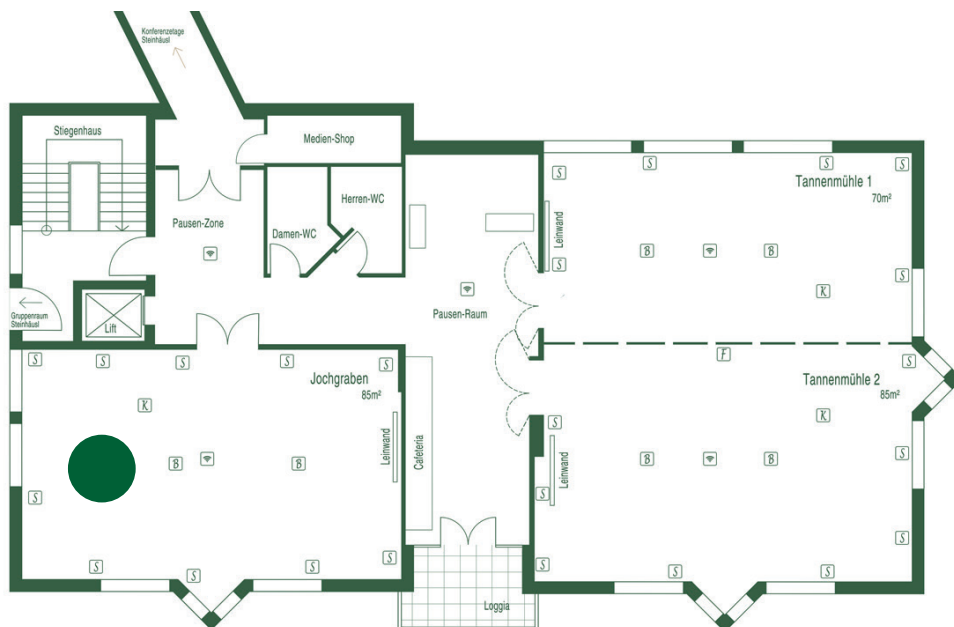
# LENGBACHHOF

\*\*\*\*

Hotel . Restaurant . Seminar . Event

## Jochgraben

|                |                  |
|----------------|------------------|
| Größe          | 85m <sup>2</sup> |
| Personenanzahl | max. 60          |
| Lage           | 3. Stock         |
| Belag          | Teppichboden     |
| Klimatisiert   | ja               |
| Befahrbar      | nein             |



Bestuhlungsbeispiele